

Map of the exhibitons at Stavanger museum



Bird trail

POST 1: Taxidermy is the art of preserving animal bodies by stuffing the skins and arranging the limbs in a realistic way. In the process, the real eyes are replaced with plastic eyes. Which box contains owl eyes?

- 1. Boks A
- 2. Boks B
- 3. Boks C

POST 2: In the sand, you can see different shorebirds – called waders. What characterises a wader?

- 1. A long bill and long legs. Lacks webbing between the toes, but likes hanging out on the shoreline.
- 2. They use wading trunks and hooves when hunting for food.
- 3. Webbing between the toes, and a flat bill.



POST 3: Study the seagull guide and notice the bird with the marker next to it in the exhibition. Which gull species is it?

- 1. Great black-backed gull
- 2. European herring gull
- 3. Common gull
- 4. Lesser black-backed gull
- 5. Black-headed gull



POST 4: What is the smallest species of owl in Norway?

- 1. Mini owl
- 2. Eurasian pygmy owl
- 3. Mouse owl

POST 5: The male wood grouse and the black grouse have very similar colouring, but they're different in size and they have different tail feathers. The tail of one bird looks like an old-fashioned hand fan, while the tail of the other resembles a harp (lyre). Put the right bird name on the right drawing.



POST 6: Which of the following species has the largest skull?

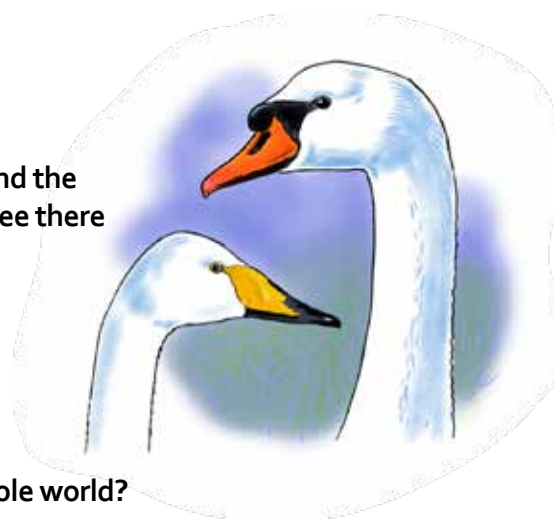
- 1. Eurasian bullfinch
- 2. Crow
- 3. Albatross

POST 7: Compare the golden eagle in the exhibition 'To the Bone' with the white-tailed eagle in the exhibition 'The Mysteries of Bird Migration'. Which bird is largest?

- 1. The golden eagle is largest.
- 2. White-tailed eagle is largest.
- 3. They're the same size.

POST 8: In Norway we have two swan species: the mute swan and the whooper swan. Look at the drawing and compare the swans you see there with the ones in the exhibition 'The Mysteries of Bird Migration'. Which species of swan is flying just under the ceiling?

- 1. Mute swan
- 2. Whooper swan



POST 9: In the autumn, many birds fly south to warmer places. We call this bird migration. Which bird migrates farthest in the whole world?

POST 10: Birds have differently shaped bills/beaks that are suited to the food they eat. Draw a line between each bill/beak and the appropriate food.

(HINT: Look at the first page.)

